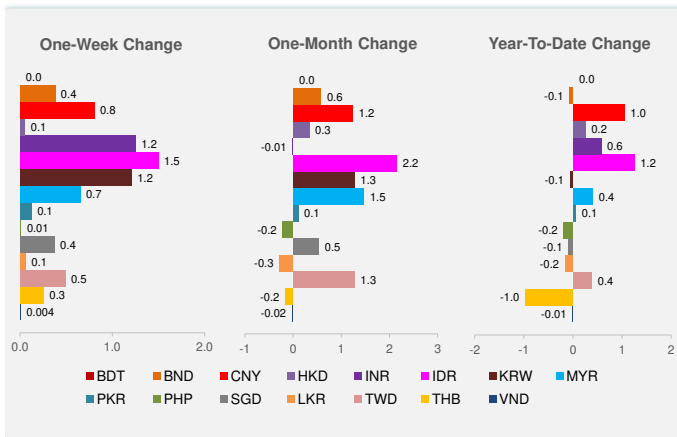
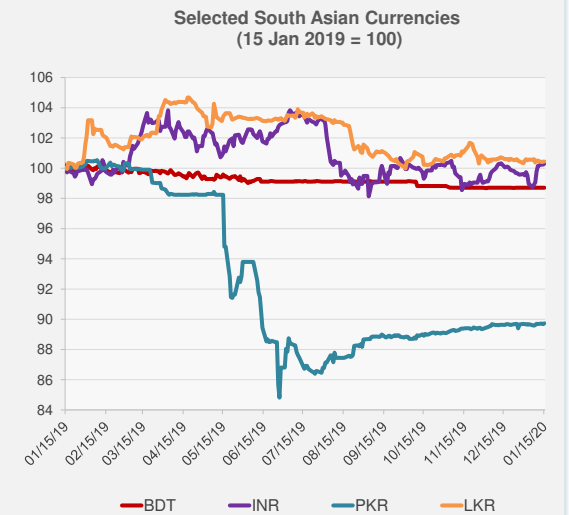
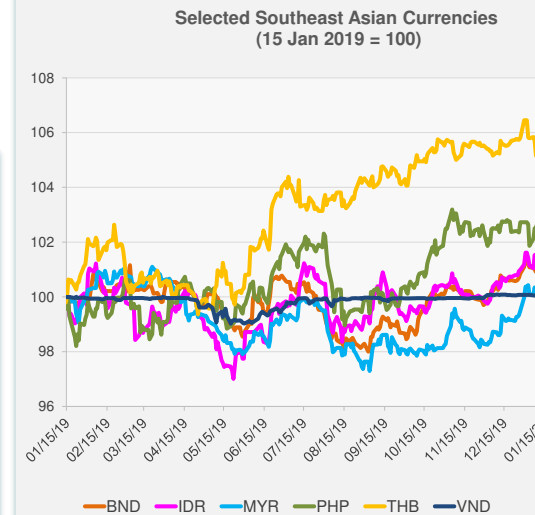
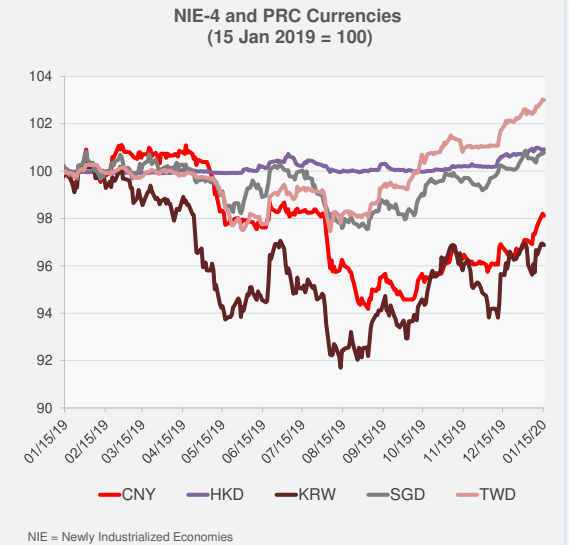
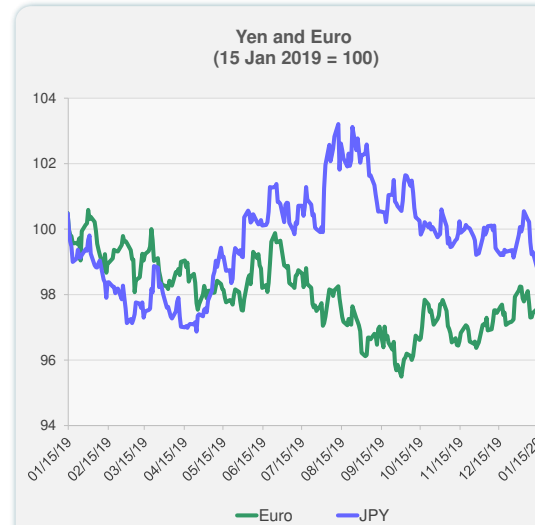


	Latest Closing	% change from Previous Day	% change from 01-Jan-20
Euro	0.90	0.20	-0.55
Japanese yen (JPY)	109.90	0.08	-1.04
Bangladeshi taka (BDT)	84.88	0.00	0.00
Brunei dollar (BND)	1.35	0.05	-0.07
Chinese yuan (CNY)	6.89	-0.10	1.05
Hong Kong dollar (HKD)	7.77	0.07	0.25
Indian rupee (INR)	70.82	0.08	0.57
Indonesian rupiah (IDR)	13,695.00	-0.11	1.25
Korean won (KRW)	1,156.90	-0.07	-0.06
Malaysian ringgit (MYR)	4.07	-0.05	0.40
Pakistan rupee (PKR)	154.81	0.06	0.06
Philippine peso (PHP)	50.75	-0.32	-0.19
Singapore dollar (SGD)	1.35	0.05	-0.09
Sri Lanka rupee (LKR)	181.46	0.00	-0.16
Taipei,China NT dollar (TWD)	29.92	-0.03	0.38
Thai baht (THB)	30.26	0.06	-0.97
Vietnamese dong (VND)	23,175.00	0.00	-0.01

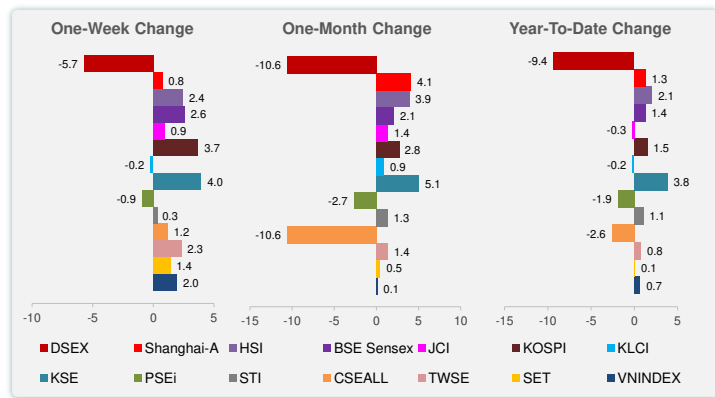
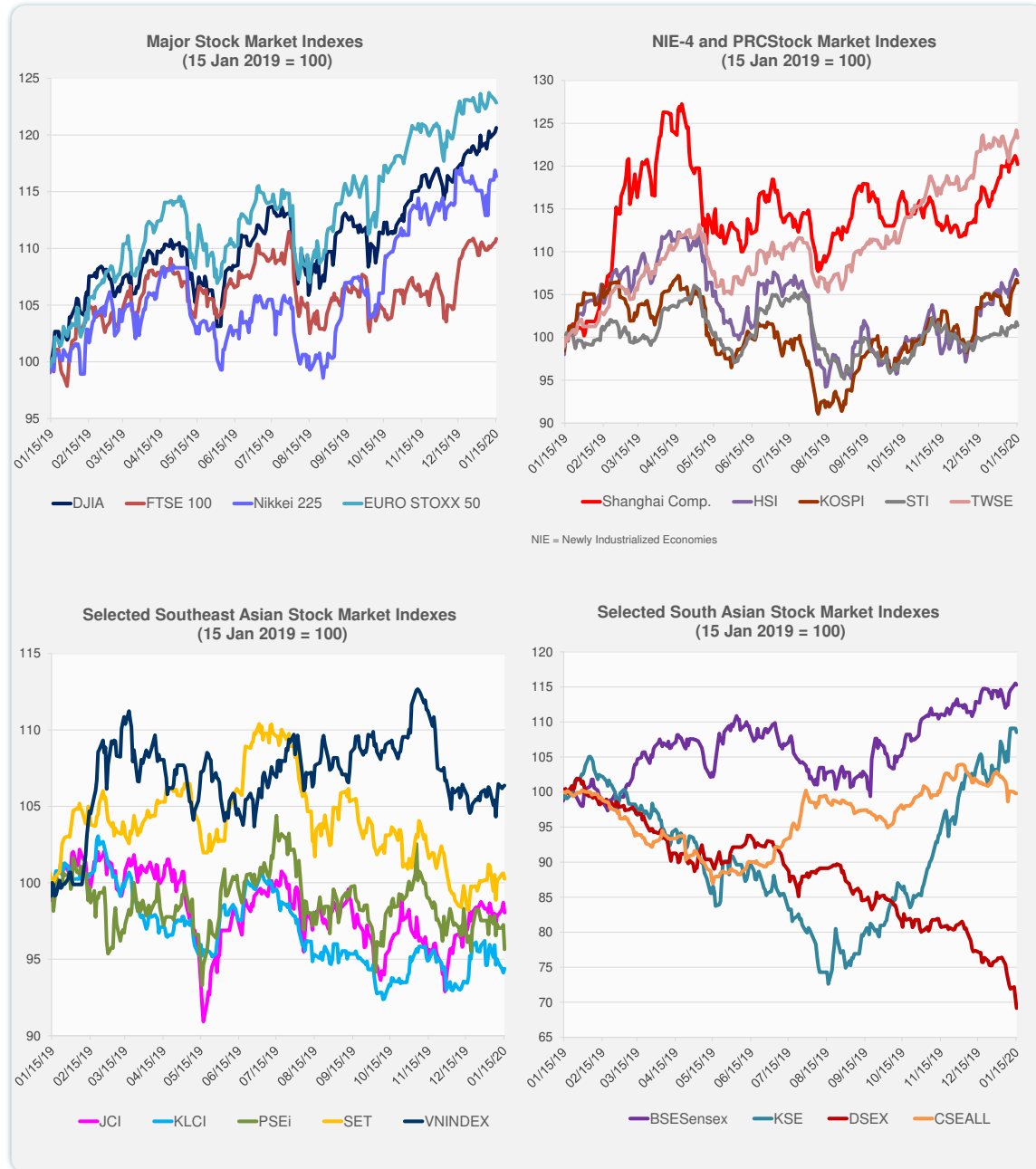


Note: Negative/Decreasing values indicate depreciation of local currency, and positive/increasing values indicate appreciation.
Source: Bloomberg.



Source: Bloomberg.

	Latest Closing	% change from Previous Day	% change from 01-Jan-20
US Dow Jones Ind Avg	29,030.22	0.31	1.72
US NASDAQ	9,258.70	0.08	3.19
US S&P 500	3,289.29	0.19	1.81
UK FTSE 100	7,642.80	0.27	1.33
EURO STOXX 50	3,768.96	-0.16	0.64
Japan NIKKEI 225	23,916.58	-0.45	1.10
Bangladesh DSEX	4,036.24	-2.12	-9.36
PRC Shanghai Comp.	3,090.04	-0.54	1.31
Hong Kong, China HSI	28,773.59	-0.39	2.07
India BSE Sensex	41,872.73	-0.19	1.37
Indonesia JCI	6,283.37	-0.66	-0.26
Korea, Rep. of KOSPI	2,230.98	-0.35	1.52
Malaysia KLCI	1,585.14	0.29	-0.23
Pakistan KSE 100	42,993.03	-0.50	3.85
Philippines PSEi	7,664.40	-1.65	-1.93
Singapore STI	3,256.98	-0.41	1.06
Sri Lanka CSEALL	5,968.63	0.00	-2.62
Taipei, China TWSE	12,091.88	-0.72	0.79
Thailand SET	1,581.05	-0.37	0.08
Viet Nam VNINDEX	967.56	0.06	0.68



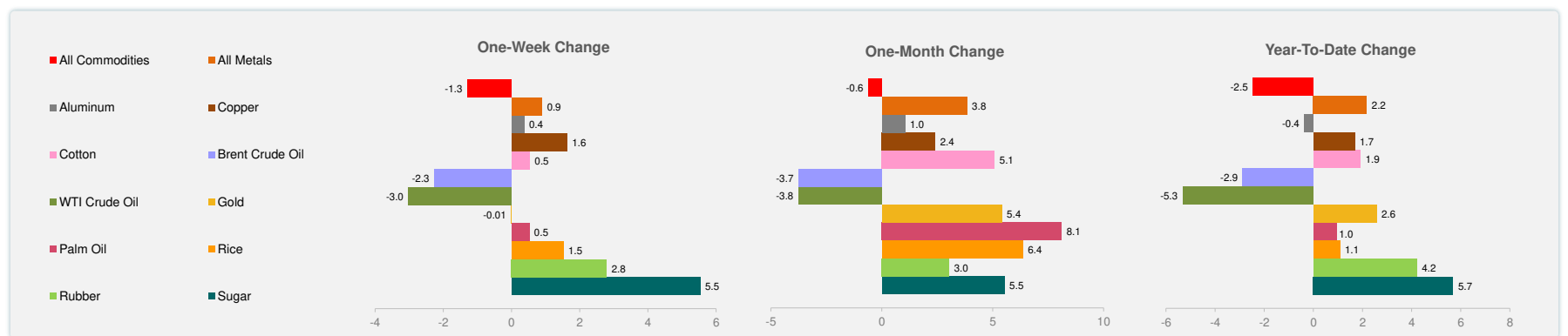
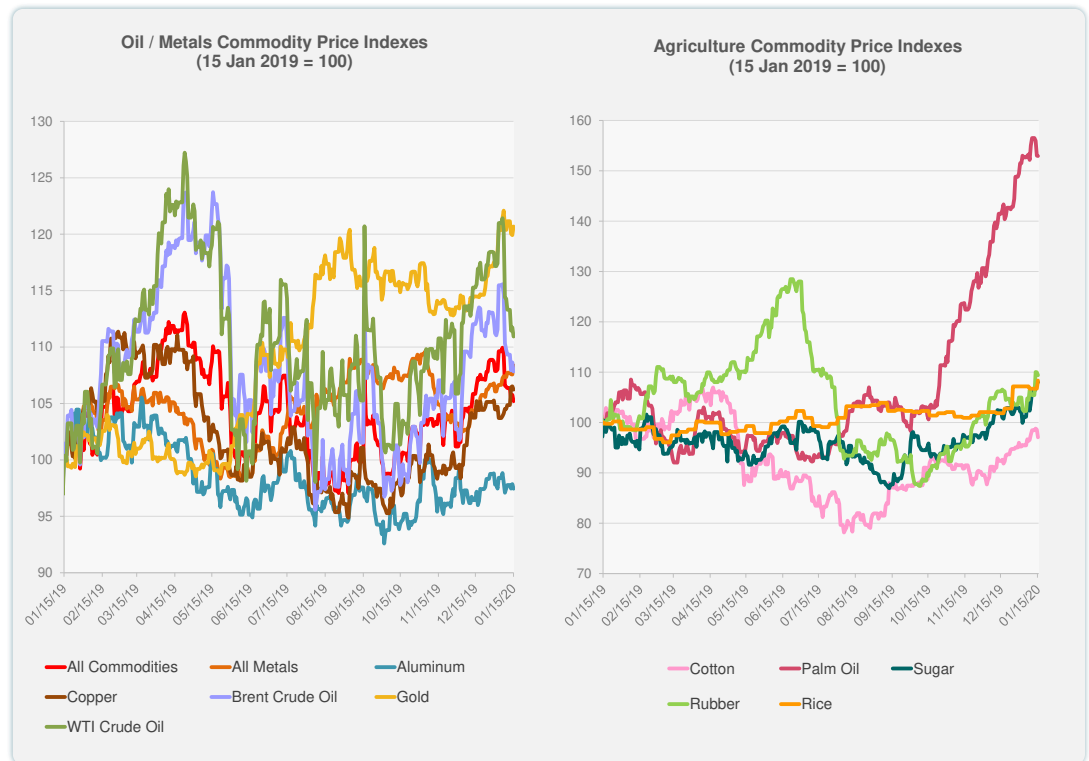
Source: Bloomberg.



Source: Bloomberg.

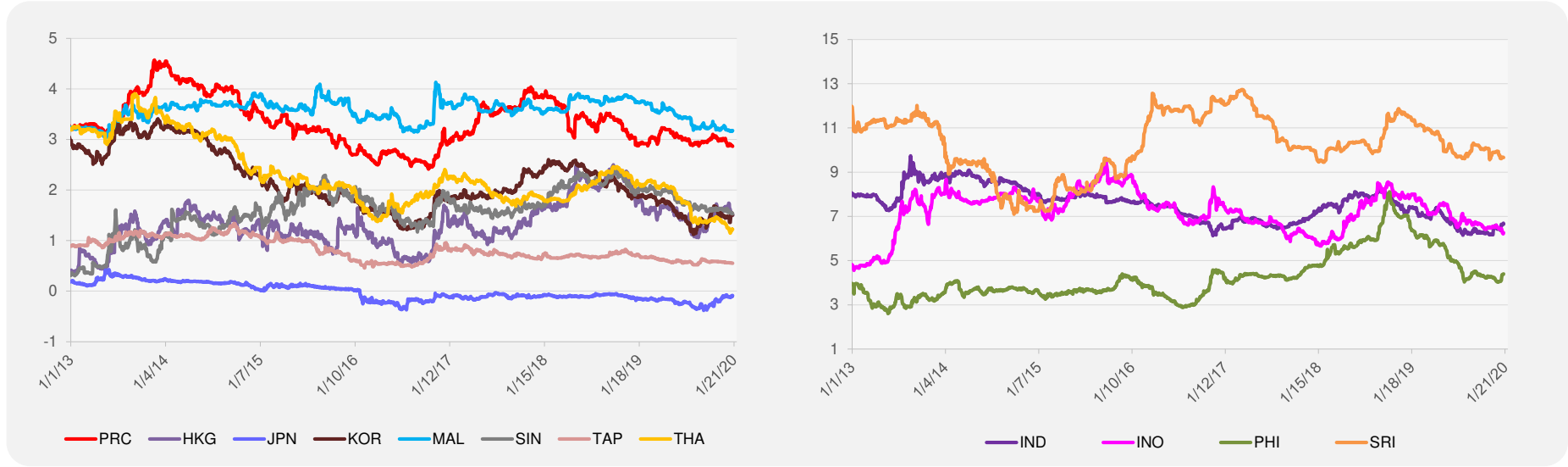
	Unit	Latest Closing	% change from Previous Day	% change from 01-Jan-20
S&P All Commodities	US\$	425.45	-0.53	-2.47
S&P All Metals	US\$	222.27	0.75	2.17
Aluminum	US\$/metric ton	1,774.75	-0.42	-0.36
Copper	US\$/metric ton	6,252.50	-0.28	1.68
Cotton	US cents/lb	67.57	-1.54	1.92
Brent Crude Oil	US\$/barrel	64.40	-0.74	-2.88
WTI Crude Oil	US\$/barrel	57.81	-0.72	-5.32
Gold	US\$/troy oz	1,556.25	0.64	2.57
Palm Oil	US\$/metric tonne	746.59	-0.05	0.95
Rice ¹	US\$/metric ton	468.00	1.52	1.08
Rubber ²	US\$/kg	173.30	-0.52	4.21
Sugar	US cents/lb	14.31	0.00	5.69

¹ Latest closing price from 15 January 2020.
² Singapore Exchange, Ribbed Smoked Sheet Rubber.

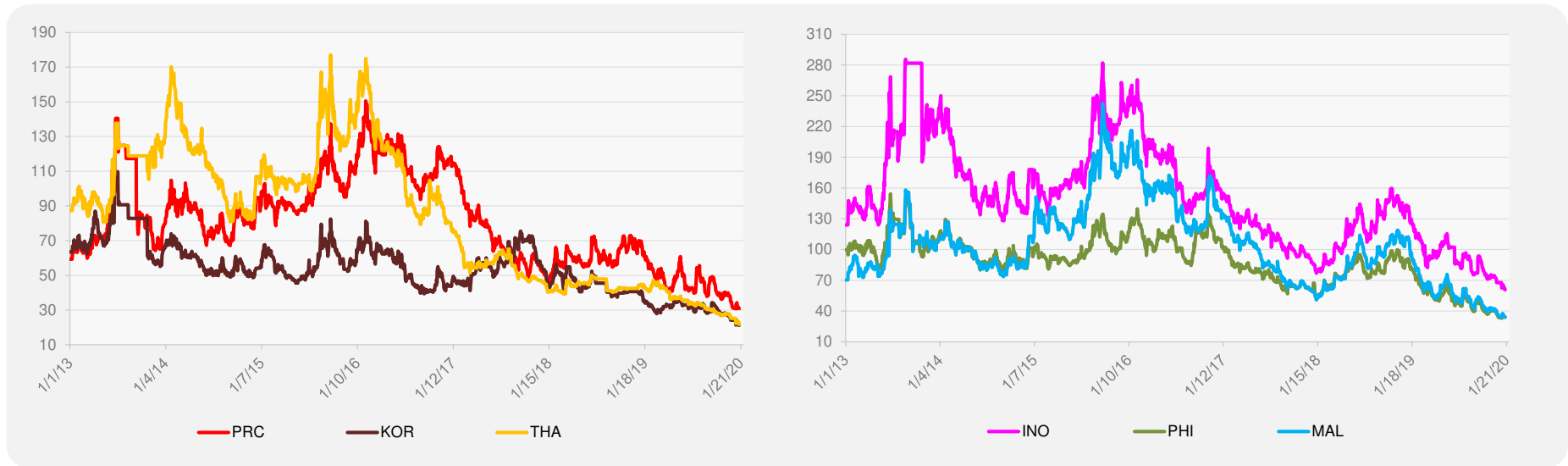


Source: Bloomberg.

5-YEAR LOCAL CURRENCY GOVERNMENT BOND YIELDS (%)



5-YEAR CREDIT DEFAULT SWAP¹



¹ In USD and based on sovereign bonds.
Source: Bloomberg.